

2025 ETC Newsletter Runner

Swedish Overshot Table Runner in Linen for 4 Shafts

Weaving Setts

Warp is sett at around 40 epi (4 ends per dent in a 10 dent reed)

Metric: 16 ends per cm (4 ends per dent in a 40/10 reed)

Tabby weft (in theory) should match the warp sett

This is a much closer sett than is usually recommended for this yarn, but it's the right yarn and that's how it was sett! Happy Weaving!

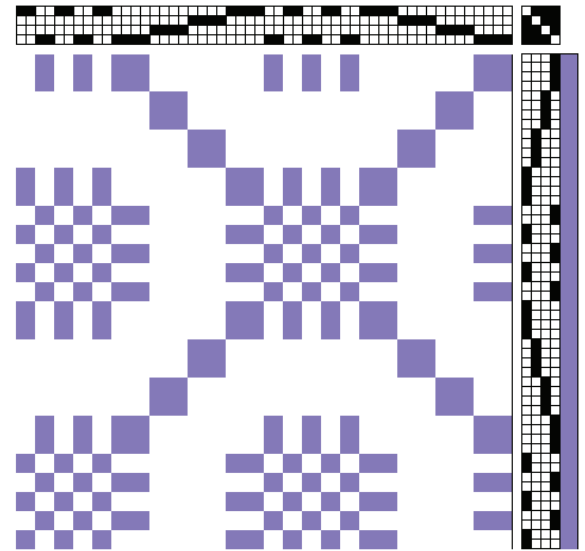
Yarn Needed

Warp: 28/2 linen (4,150 yd/lb): Half-Bleached #0002

Weft: 28/1 linen (8,350 yd/lb): Half-Bleached #0002

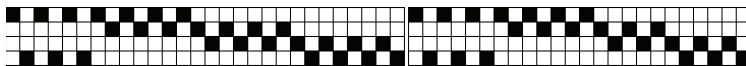
16/1 linen (5,500 yd/lb): Grey-Blue #0515

Profile Draft Draft for Pattern



Threading Draft for Border

Repeat right border edge once, then main border as many times as desired. Reverse for left edge.

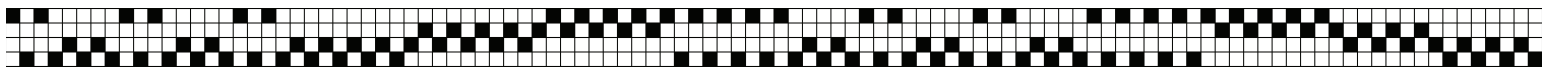


Border: Repeat as desired

Border Edge: Repeat x1

Threading Draft for Pattern

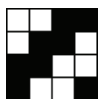
Repeat as many times as desired. Leave off far left section for symmetry before weaving left-side border.



Leave off last repeat

Tie up & Treading

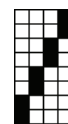
Tie up the treadles, including a tabby. Weave a hem (1 inch of plain weave will do it).



Tie-up - add tabby as you like it

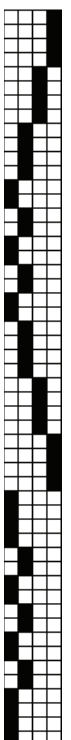
Border Treading

(use Tabby)



Pattern Treading

(use Tabby)



Weave the border as many times as desired, transitioning into the main pattern, and repeat. Reverse the border for the other end.

Use two strands of the 16/1 wound together (or use a double bobbin shuttle) for the pattern weft.

